

This document is intended to supplement the recorded version of the live meeting. Technical difficulties resulted in the initial portion of the meeting not being properly recorded. Therefore, this document paraphrases the missing content and serves as an introduction to the meeting recording.

### **Description of the Meeting**

The meeting was held November 4, 2019 at the Trinity United Methodist Church, Los Osos, CA. Approximately 75 people attended, in addition to SLO County Library staff, Supervisor Bruce Gibson, and staff of SLO County Public Works. In addition to the attendees at the venue, six people watched all or portions of the proceedings remotely via live webcast. Attendees were seated at 10 tables. Participants at each table elected a spokesperson and were responsible for developing lists of pros and cons for each of the four potential library sites in Los Osos after hearing descriptions of each site. That portion of the meeting is referred to as the “Table Group Workshop” in the meeting introduction slide shown below. The top two pros and cons for each site as determined by each table were then eventually tabulated on large paper banners for all to see. All attendees were then allowed to “vote” for their favorite and least favorite options by placing colored stickers at the Location option of their choice.

### **Schedule for the Night**

- **Introduction & Project Overview** (6:30pm - 7:00pm)
- **Location Options Analysis** (7:00pm - 8:20pm)
  - table group workshop
- **Public Voting** (8:20pm - 8:25pm)
- **Final Statements** (8:25pm - 8:30pm)

### **Introductory Remarks –**

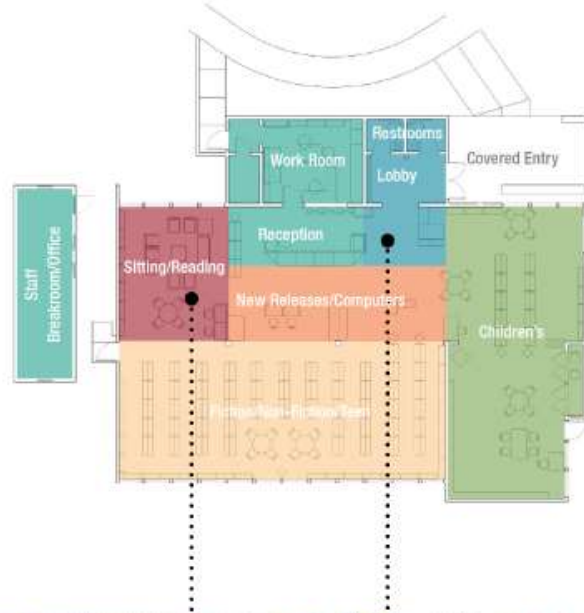
Library staff described the purpose of the meeting and compared the characteristics of the current library to the desired or targeted characteristics, as shown on the following slides.

# Introduction

- Why Los Osos needs a new library
  - Size no longer serves needs of growing community
  - Larger collection
- Who is funding this new library
  - Friends of Los Osos Library
  - County of San Luis Obispo
- Alternatives Analysis - Phase 1
  - Look at needs of the library and impacts of different types of development
  - General feedback from the community as a response was that the future Library should be near the existing Library location

## Current Facility Assessment

	Current
Lobby/Restrooms	327 s.f.
Reception/Front Desk	219 s.f.
Work Room/Staff Offices	1136 s.f.
Children's	1,064 s.f.
Fiction/Non-Fiction/Teen	1,235 s.f.
New Releases	100 s.f.
Computers	338 s.f.
Sitting/Reading	380 s.f.
<b>TOTAL S.F.</b>	<b>4,799 s.f.</b>
PARKING SPACES	22 (10,000 s.f.)



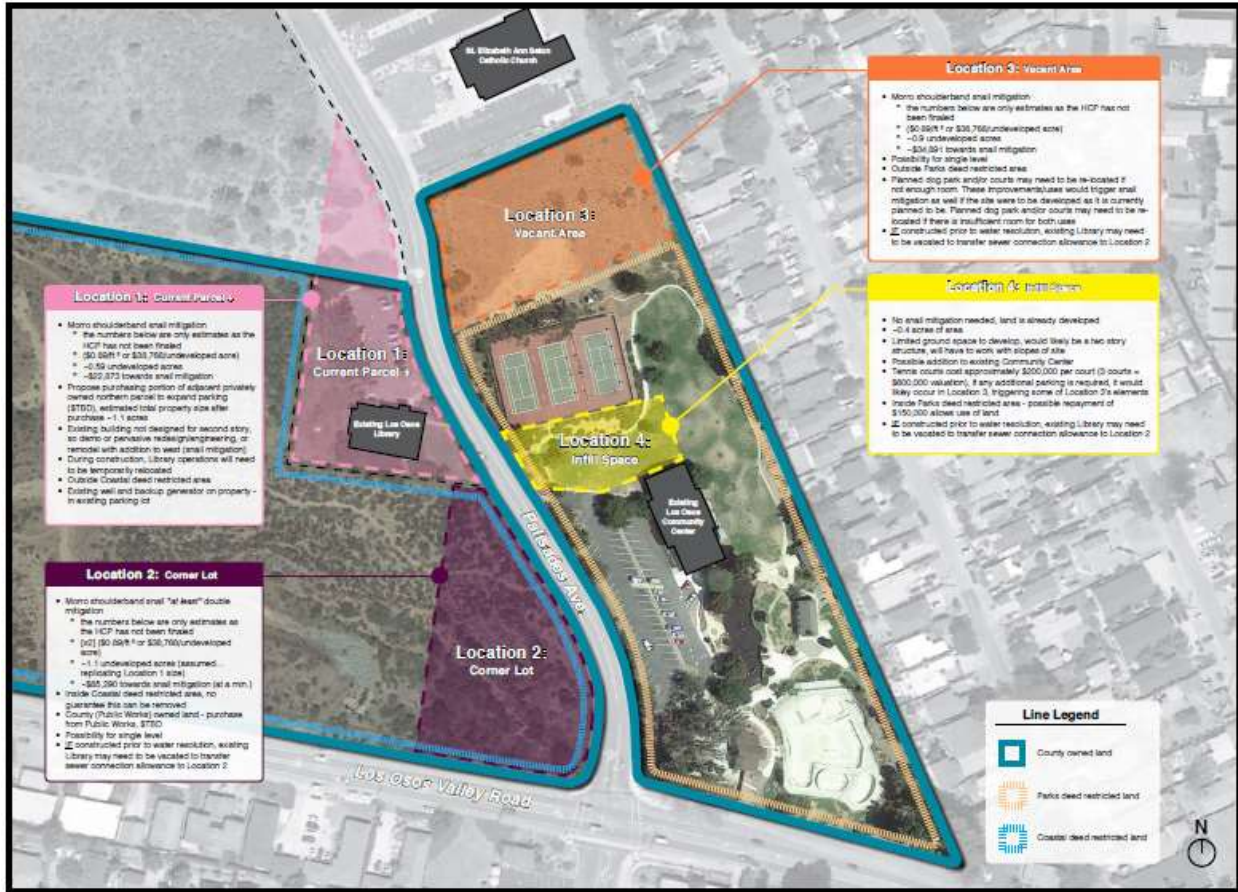
## Desired Program

	Current	Space Increase	<b>Desired</b>	% Increase
Lobby/Restrooms	327 s.f.	x 2.45	<b>800 s.f.</b>	145%
Reception/Front Desk	219 s.f.	x 1.37	<b>300 s.f.</b>	37%
Work Room/Staff Offices	1136 s.f.	x 1.14	<b>1300 s.f.</b>	14%
Childrens	1,064 s.f.	x 1.88	<b>2,000 s.f.</b>	88%
Fiction/Non-Fiction/Teen	1,235 s.f.	x 1.38	<b>1,700 s.f.</b>	38%
New Releases	100 s.f.	x 2.00	<b>200 s.f.</b>	100%
Computers	338 s.f.	x 1.48	<b>500 s.f.</b>	48%
Sitting/Reading	380 s.f.	x 2.11	<b>800 s.f.</b>	111%
Meeting Rooms	-	-	<b>450 s.f.</b>	-
Conference Room	-	-	<b>750 s.f.</b>	-
<b>TOTAL S.F.</b>	<b>4,799 s.f.</b>	<b>x 1.83</b>	<b>8,800 s.f.</b>	<b>83%</b>
PARKING SPACES	22 (10,000 s.f.)	x 2.00	<b>44 (20,000 s.f.)</b>	

## Introduction

- Goals of tonight's Public Workshop
  - Discussion of four possible library locations within general preferred area defined by the community
  - Compile a pros and cons list of each site
  - Vote to determine community's most desired and least desired potential sites

The overall location of the four site options was illustrated (See next slide). Later slides show subsets of each location with more readable descriptions for each



Finally, the guidelines for how the meeting will develop the list of pros and cons and capture attendee input was described:

# Workshop Guidelines

Schedule - Location 1	
Pro Discussion	5 minutes
Con Discussion	5 minutes
Write Up	10 minutes

Schedule - Location 2	
Pro Discussion	5 minutes
Con Discussion	5 minutes
Write Up	10 minutes

Schedule - Location 3	
Pro Discussion	5 minutes
Con Discussion	5 minutes
Write Up	10 minutes

Schedule - Location 4	
Pro Discussion	5 minutes
Con Discussion	5 minutes
Write Up	10 minutes

1. The goal is to hear the community's thoughts and ideas - grandstanding of ideas will not be entertained.
2. Do not feel pressured into agreeing or voting with the majority, all thoughts and opinions are important.
3. **Moderators** will guide the small group discussions at each table for each discussion.
  - **Moderators** raise hand if question arises - Chris or Shana will answer. If important for whole room to hear, we will pause the timer and explain, then resume.
  - Table groups will decide on top 2 ideas.
  - **Table discussions will end when time is up.**
  - **Moderators** will provide **one** of top 2 ideas when asked by Chris/Shana (we will call on your table). We will go around the room multiple times (if necessary) and write responses on large sheets until all top 2 answers from each table are up.

Each location was described in detail and attendees developed their lists of pros and cons after the description of each location (see the following four slides. The recording begins with the description of location #3.



### Location 1: Current Parcel +

- Morro shoulderband snail mitigation
  - the numbers below are only estimates as the HCP has not been finalized
  - (\$0.89/ft<sup>2</sup> or \$38,768/undeveloped acre)
  - ~0.59 undeveloped acres
  - ~\$22,873 towards snail mitigation
- Propose purchasing portion of adjacent privately owned northern parcel to expand parking (\$TBD), estimated total property size after purchase ~1.1 acres
- Existing building not designed for second story, so demo or pervasive redesign/engineering, or remodel with addition to west (snail mitigation)
- During construction, Library operations will need to be temporarily relocated
- Outside Coastal deed restricted area
- Existing well and backup generator on property - in existing parking lot

### Location 1: Current Parcel +

Existing Los Osos  
Library

## Location 2: Corner Lot

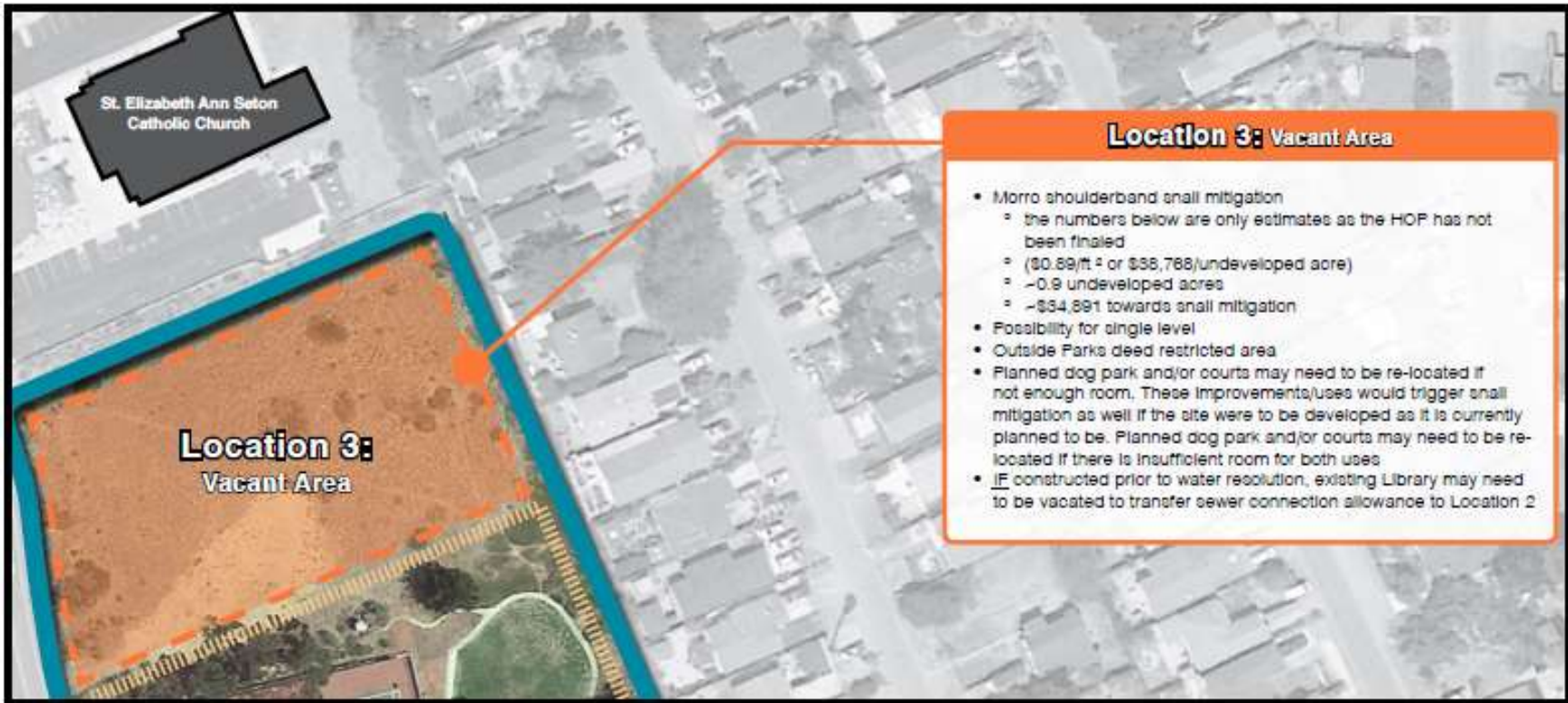
- Morro shoulderband snail *\*at least\** double mitigation
  - the numbers below are only estimates as the HCP has not been finalized
  - [x2] (\$0.89/ft<sup>2</sup> or \$38,768/undeveloped acre)
  - ~1.1 undeveloped acres (assumed... replicating Location 1 size)
  - ~\$85,290 towards snail mitigation (at a min.)
- Inside Coastal deed restricted area, no guarantee this can be removed
- County (Public Works) owned land - purchase from Public Works, \$TBD
- Possibility for single level
- IF constructed prior to water resolution, existing Library may need to be vacated to transfer sewer connection allowance to Location 2

**Location 2:  
Corner Lot**

Palisades Ave.

Los Osos Valley





St. Elizabeth Ann Seton  
Catholic Church

**Location 3:**  
Vacant Area

**Location 3: Vacant Area**

- Morro shoulderband snail mitigation
  - the numbers below are only estimates as the HOP has not been finalized
  - (\$0.89/ft<sup>2</sup> or \$36,766/undeveloped acre)
  - ~0.9 undeveloped acres
  - ~\$34,891 towards snail mitigation
- Possibility for single level
- Outside Parks deed restricted area
- Planned dog park and/or courts may need to be re-located if not enough room. These Improvements/uses would trigger snail mitigation as well if the site were to be developed as it is currently planned to be. Planned dog park and/or courts may need to be re-located if there is insufficient room for both uses
- IF constructed prior to water resolution, existing Library may need to be vacated to transfer sewer connection allowance to Location 2

